



Operation Guide

For Windows CE 5.0

Requires ESRI ArcPad Software version 7.0 or greater
(Optimized for the Magellan MobileMapper CX)

Terms of Use

This manual and the software described herein are furnished under license, and are subject to a license agreement. The software may be used only in accordance with the terms and conditions of the agreement.

No part of this manual may be reproduced or transmitted in any form or by any means electronic, mechanical, or otherwise, including photocopying and recording – without prior written permission of Wind Environmental Services, LLC.

We have made every effort to ensure the accuracy of the material provided herein; however, the publishers and authors assume no responsibility whatsoever for the uses made of this material or for decisions based on its use. Further, we make no warranties, either expressed or implied, regarding the contents of this product or its fitness for any particular purpose. Neither the publisher nor anyone else who has been involved with the creation, production, or delivery of this material shall be liable for any reason.

If you have any comments or suggestions concerning this manual, please forward them to Wind Environmental Services, LLC. Information in this manual is subject to change without notice.

© 2007 - 2008 by Wind Environmental Services, LLC. All Rights Reserved.

ArcPad ® is a registered trademark of ESRI

Other companies and products mentioned herein are trademarks or registered trademarks of their respective trademark owners.

Table of Contents

- Introduction to Wind Image TMPage 3
- Folder To MonitorPage 4
- Browser For .apmPage 4
- Shapefile SelectionPage 5
- Field / Attribute SelectionPage 6
- Monitor FolderPage 6
- Use Image ExifPage 7
- Auto RenamePage 9
- Auto MovePage 9
- Add & Edit Page 10
- Additional Resources Page 11

Introduction

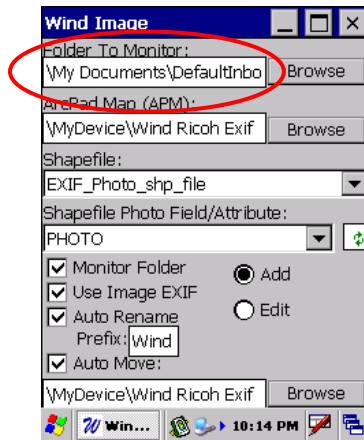
Thank you for purchasing a copy of Wind Image™ For ArcPad®

This manual is intended to guide you through the operational procedures of using the Wind Image extension for ESRI® ArcPad® Software. Illustrations are provided throughout for your reference.

Wind Image™ for ArcPad® provides you with a very robust set of image integration tools that allow you to link images to features within the ArcPad® mobile GIS application. As you will see in the coming pages Wind Image™ not only automates the process of linking images, it also streamlines the entire image integration process. New at version 2.0 in addition to being able to link images; Wind Image™ now has the ability to read EXIF data directly from images as they are received. Allowing Wind Image™ to fully integrate the Ricoh 500SE® camera with ArcPad®. In its standard mode Wind Image™ can work with any camera capable of delivering images to your mobile device if you just need to link an image to a feature. At this time if you would like to use the EXIF capability of Wind Image™ only the Ricoh 500SE® camera is supported.

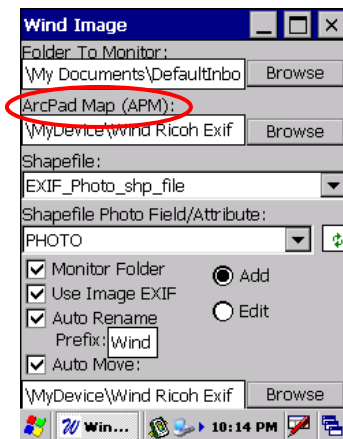
- **Folder To Monitor:**

- The Folder to monitor window is where you specify the location that images are received into your device such as where the Bluetooth manager or the FTP server deliver the images to your device. (e.g. My Documents)
- To set the folder to monitor click the browse button to the right side of the folder to monitor window. Browse to the folder where your inbound images are delivered. Click the folder once to high-light it, then click select. This location should now be displayed in the window and is set as your folder to monitor for inbound images.

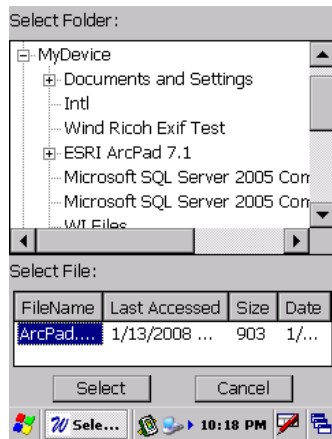


- **Browse for .apm:**

- The Browse for .apm button is where you select the .apm file (ArcPad ® map file) that you want to work with in Wind Image ™.



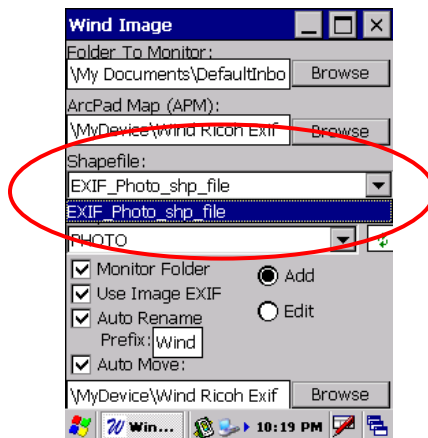
- Click on the Browse for .apm button to navigate to the folder that contains the .apm you want to work with. In the directory tree click on the folder once to select it. After you have selected the folder all of the available .apm files that are within the folder will be displayed in the lower window of the selection screen. Now click on the .apm file you want to work with highlighting it and then click the select button at the bottom of the screen.



- You have now selected the .apm (ArcPad ® map file)

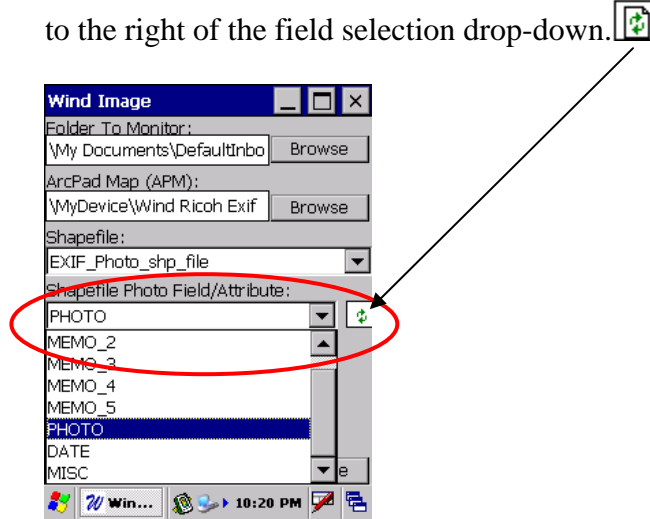
- **Shapefile Selection:**

- Here you will select the shape file that you want to append images to. If you are going to be creating new locations as your images are received you will need to select a point shape file. If you will be appending images to existing features you can select a point, line, or polygon shape file.
- Simply select the appropriate shape file from the pull-down of available shape files contained in your .apm file.



- **Field / Attribute Selection:**

- Here you will select the field within the selected shapefile that you want to append the image into. This field can be any text field within the shapefile. We recommend that when creating your shapefile that you create a text field named Photo to append images to, but you may use any available text field.
- In the event that you fields are not displayed try clicking the refresh button to the right of the field selection drop-down.



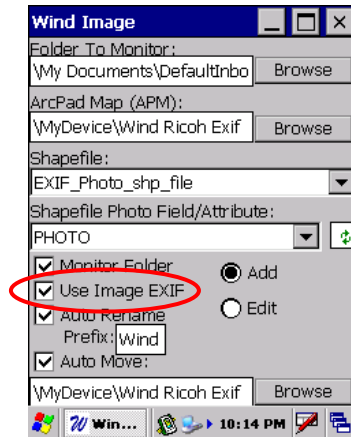
- **Monitor Folder:**

- The Monitor Folder command essentially is the on and off control for Wind Image™, any time the Monitor folder box is checked and an image is received the Wind Image™ application will trigger. When the box is not checked and an image is received nothing will happen.
- A new feature added in version 2.0 when you check the box next to the Monitor folder command if ArcPad® is not already running Wind Image™ will prompt you to open ArcPad®. You must have ArcPad® running in order to enable the Monitor folder command.

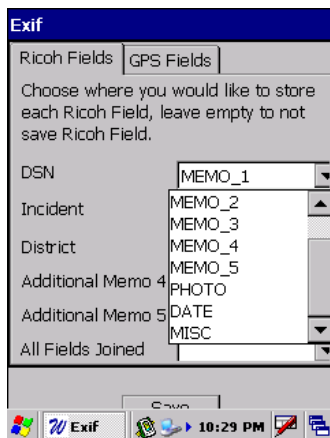


- **Use Image Exif:**

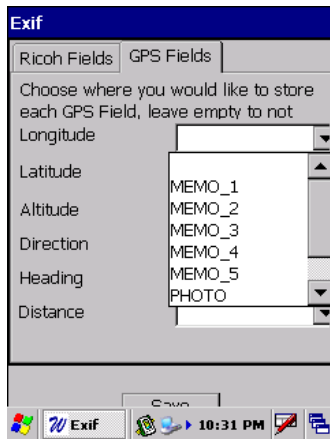
- The use image EXIF command is new at version 2.0 the use image EXIF command allows Wind Image™ to read the EXIF data that is stored within the jpg by the Ricoh 500SE® camera. The Ricoh camera inserts several items into the EXIF such as the latitude and longitude from its on-board GPS. Distance and direction to the item being photographed when coupled with a Laser Technology TruePulse 360®. And up to five memos or questions and there values.



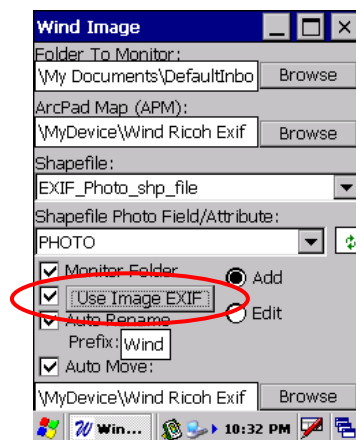
- In Wind Image™ V2.0 when you check the box next to use image EXIF and activate this control when the first image is received that contains EXIF data the EXIF configuration window will appear. This is where you will decide what information from the image EXIF you want to bring into your shapefile and which fields within your shapefile that you want to store the data in. The fist tab in the EXIF configuration is the Ricoh fields tab on the left side is all of the memo fields from the Ricoh camera. On the right are pull-down windows for you to select which field in your shapefile that you want to append the values to. If you do not want to bring the values from a particular memo across to a field in you shapefile simply leave it blank.



- The next tab in the EXIF configuration is the GPS Fields in this tab you can choose to append this data to fields in you shapefile as well. Simply select from the pull-down windows the field within your shapefile that you want to append the information to.

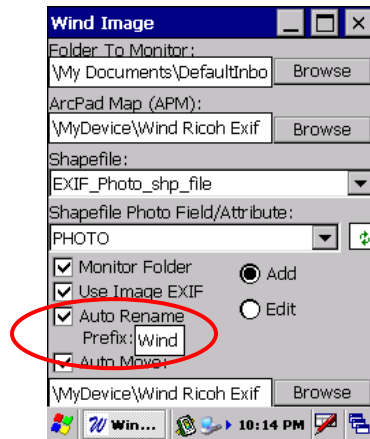


- Once you have made all of the necessary EXIF configurations click the save button to release the image creating the new point or appending the image to an existing feature. Once these settings have been made you will not need to configure this every time you send over an image only the first time. However in the event you need to modify your settings you will notice that once you have configured your EXIF settings, now the use image EXIF control is now a button. To make changes to your EXIF settings click on the button to re-open the EXIF configuration window.



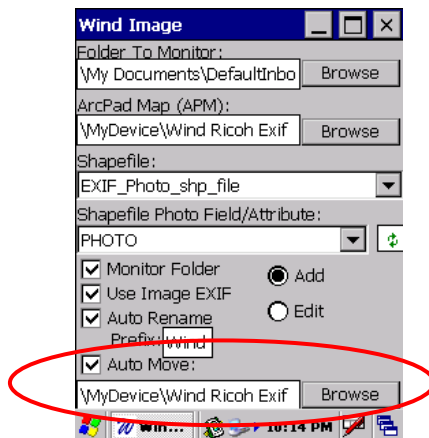
- **Auto Rename:**

- When you select the auto rename function Wind Image™ will automatically rename every image that is received starting with the prefix that you specify. This can be a unit ID, project number, or any other prefix you specify. After your prefix will be a series of numbers based on the date and time the image was received. By selecting auto rename you eliminate the possibility of overwriting existing images in you database.



- **Auto Move:**

- Auto Move allows you to automatically move images to other locations on your device. In order for you to see your images in ArcPad® you will need to move your images to the same location as your shapefile. (e.g. SD Card\Project Name) keeping your shapefile and images all in one location which helps when transferring data back to your desktop.
- Wind Image™ will default auto move to the location of your .apm file. If your .apm and you shapefiles are stored in different locations you will need to manually set your auto move to the location of your shapefiles by clicking on the browse button and navigating to the folder that contains your shapefiles, clicking on it once to highlight it and then clicking the select button.



- **ADD & Edit:**

- Add Button; Select this when you would like to create new point features when an image arrives. You will need to have GPS activated in ArcPad® if no GPS is available in ArcPad points can be created using the image EXIF when pictures are taken using a GPS enabled Ricoh 500SE® camera. If no GPS is available in ArcPad® or in the image EXIF new points will be created at coordinate 0,0. When an image arrives Wind Image™ will automatically trigger ArcPad® to create a new feature open the attribute table and link the image upon an image being received.
- Edit Button; Select this if you would like to add images to already existing features. You can add images to point, line, and polygon features. Verify that you have Wind Image™ set to the correct shapefile and field; set Wind Image™ to edit mode. Then in ArcPad® select the feature you want to append an image to using the select and vertex editing tool. Once the image arrives Wind Image™ will open the attribute window and attach the image.

Note: Prior to transferring an image make sure the attribute window is closed.



Additional Resources

For additional information on Wind Image™ visit
www.windenvironmental.com/windimage

For additional information on ArcPad® visit
www.esri.com/arcpad
or
support.esri.com

For additional information on the MobileMapper CX visit
www.windenvironmental.com/thales.html
or
pro.magellangps.com

For additional information on the Ricoh Camera visit
www.windenvironmental.com/GPS-Camera
or
www.ricohsolutions.com/geo

For additional information on Laser Technology TruePulse 360® visit
www.windenvironmental.com
or
www.lasertech.com